



# MANTADIA NATIONAL PARK

**Category:** National Park, Category II

**Manager:** Madagascar National Parks (MNP)

**Area:** 15,480 ha

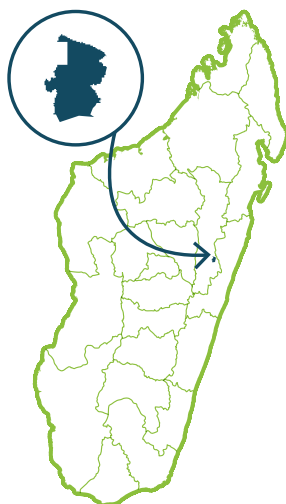
**Geolocation:** Province of Toamasina;  
Region of Alaotra Mangoro;  
District of Moramanga

**International label:** Key Biodiversity Area (KBA), Important Bird Area (IBA)

**Start of FAPBM grants:** 2023

## FLAGSHIP SPECIES

Mantadia National Park is part of the Eastern ecoregion, which is among the most species-rich areas in the country. **The park's mid-altitude dense moistevergreen forest has a high biological diversity, including the largest lemur species in Madagascar, *Indri indri*, a rare frog species, and various orchids.**



## 106

**SPECIES OF BIRDS**

including  
3 endangered (e.g. Madagascar grebe) and 8 vulnerable (e.g. Madagascar rail, Madagascar red owl)



## 12

**SPECIES OF LEMURS**

including 3 critically endangered (e.g. *Indri indri*), 2 endangered (e.g. Aye-aye), and 6 vulnerable (e.g. red-bellied lemur)



## 23

**SPECIES OF REPTILES**

including 1 endangered chameleon species of the genus *Brookesia*



## 22

**SPECIES OF OTHER MAMMALS**

including 1 endangered



## 10

**SPECIES OF BATS**

including 2 vulnerable (e.g. Madagascar flying fox)



## 45

**SPECIES OF AMPHIBIANS**

including 5 endangered and 2 vulnerable



## 6

**SPECIES OF CARNIVORANS**

including 4 vulnerable (e.g. fossa, Malagasy civet)



## 388

**SPECIES OF PLANTS**

including 329 endemic to Madagascar: 1 critically endangered, 4 endangered, 2 vulnerable and 2 local endemic



## PROTECTED AREA SPECIFICITIES

### LANDSCAPES AND HABITATS



Mid-altitude dense moistevergreen forest, rocky vegetation, mosaic of culture, shrubland, and secondary forest.

### PRESSURES AND THREATS



Deforestation for shifting cultivation and land grabbing, fires, illegal logging, collection of non-timber forest products.



### ECONOMIC VALUE

It is one of the most visited protected areas (PA) of the System of Protected Areas of Madagascar (SAPM), representing an employment opportunity and a significant source of income for local communities. It also serves as a source of drinking water for neighboring villages.



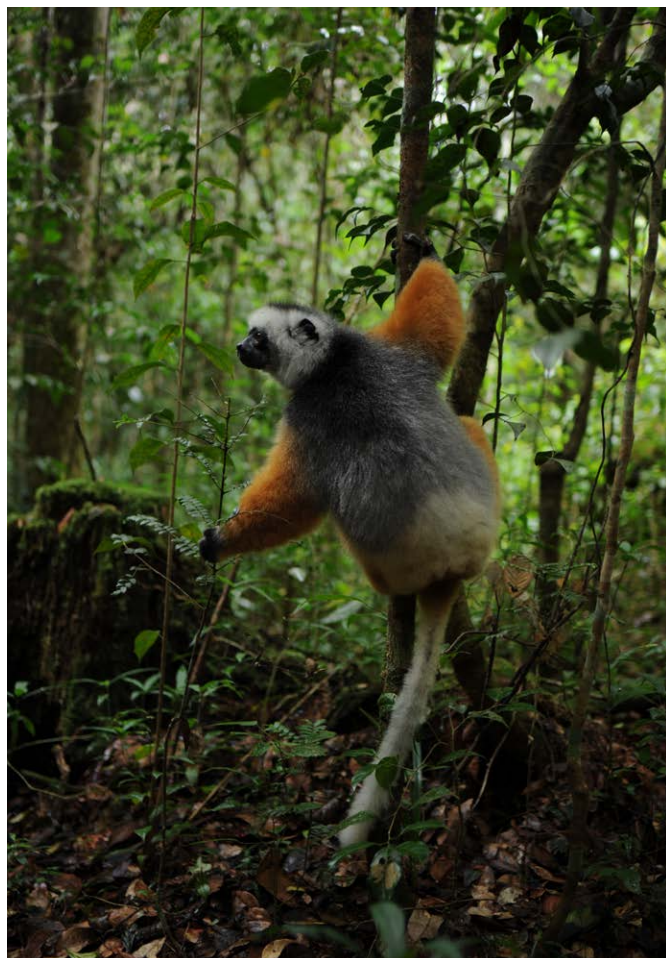
### LOCAL COMMUNITIES INITIATIVES

Like all PAs managed by MNP, the management of Mantadia National Park is a **collaborative co-management** with the participation of members of local communities in **conservation and development activities**. They are brought together in the **CLPs (Local Park Committees)** and **COSAPs (Protected Areas Orientation and Support Committee)**.









### FAPBM'S EFFORTS AND RESULTS

For PAs managed by MNP, **FAPBM secures part of salary costs and operating expenses for the management unit.**



Forest © MNP

Propithecus andrademata © MNP






[fapbm](https://www.fapbm.org)

[www.fapbm.org](https://www.fapbm.org)

Created in 2005, the **Madagascar Protected Areas and Biodiversity Fund (FAPBM)** is a Malagasy **trust fund dedicated to the conservation of Madagascar's biodiversity**. It is an innovative and sustainable financing mechanism for Madagascar's Protected Areas System (SAPM).